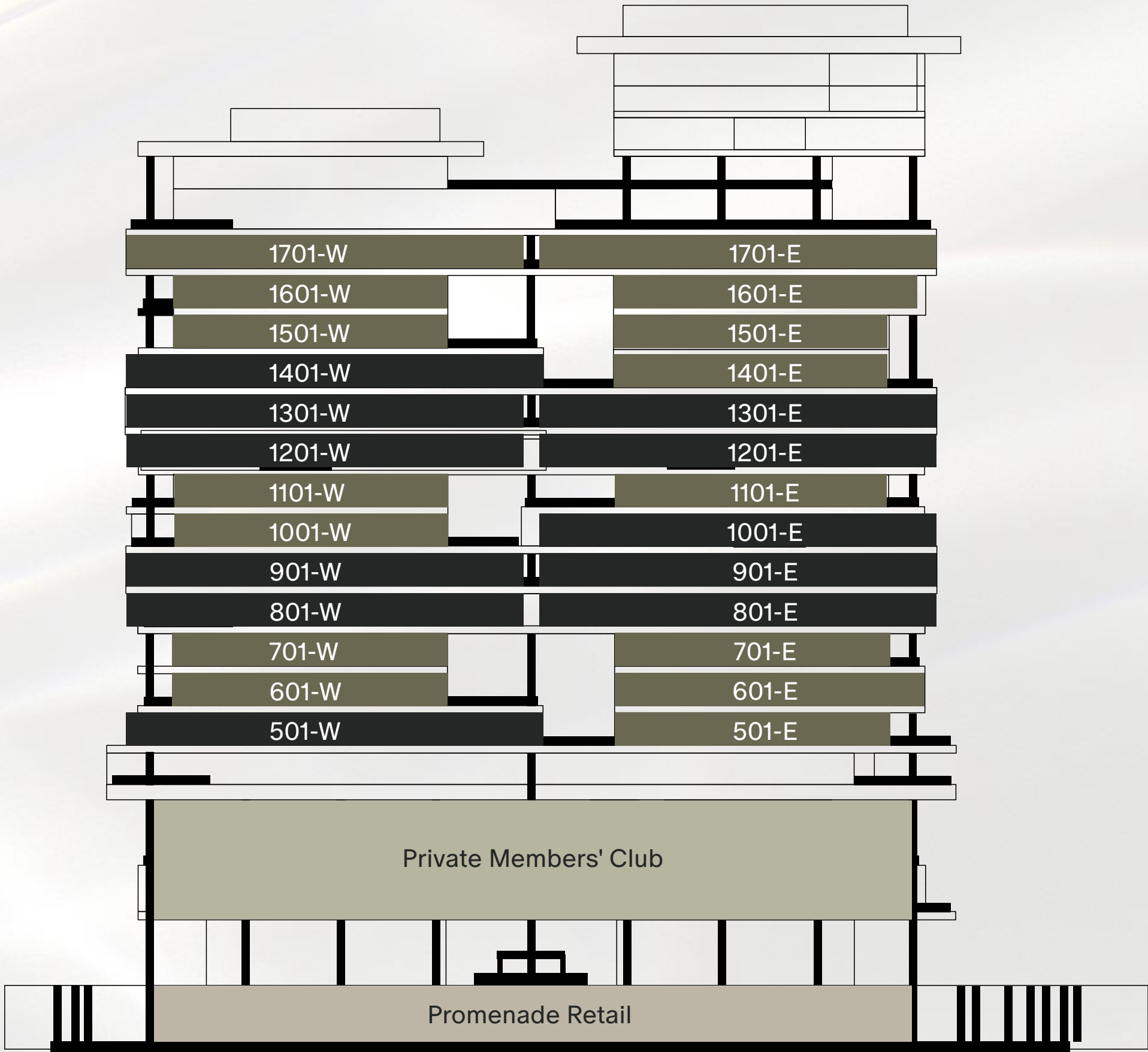


# UNIT MIX



Private  
Members'  
Club

68,448 sq. ft.

15  
Grand  
Offices

From 8,321 sq. ft.

11  
Ultra-Grand  
Offices

From 11,829 sq. ft.

Promenade  
Retail

12,189 sq. ft.



# TEST FIT - SIMPLEX

## GRAND OFFICE

TOTAL HEADCOUNT: 62  
(W/O Meeting Rooms)

AMENITIES

- 1 Reception
- 2 Terraces

OFFICES

- 1 Large Office
- 1 Medium Office

WORKSTATIONS (LEFT TO RIGHT)

- Zone 1. Workstations 16pax
- Zone 2. Workstations 16pax
- Zone 3. Workstations 16pax
- 1 Phone Room

MEETING SPACES

- 1 Boardroom
- 1 Private Collaboration Room

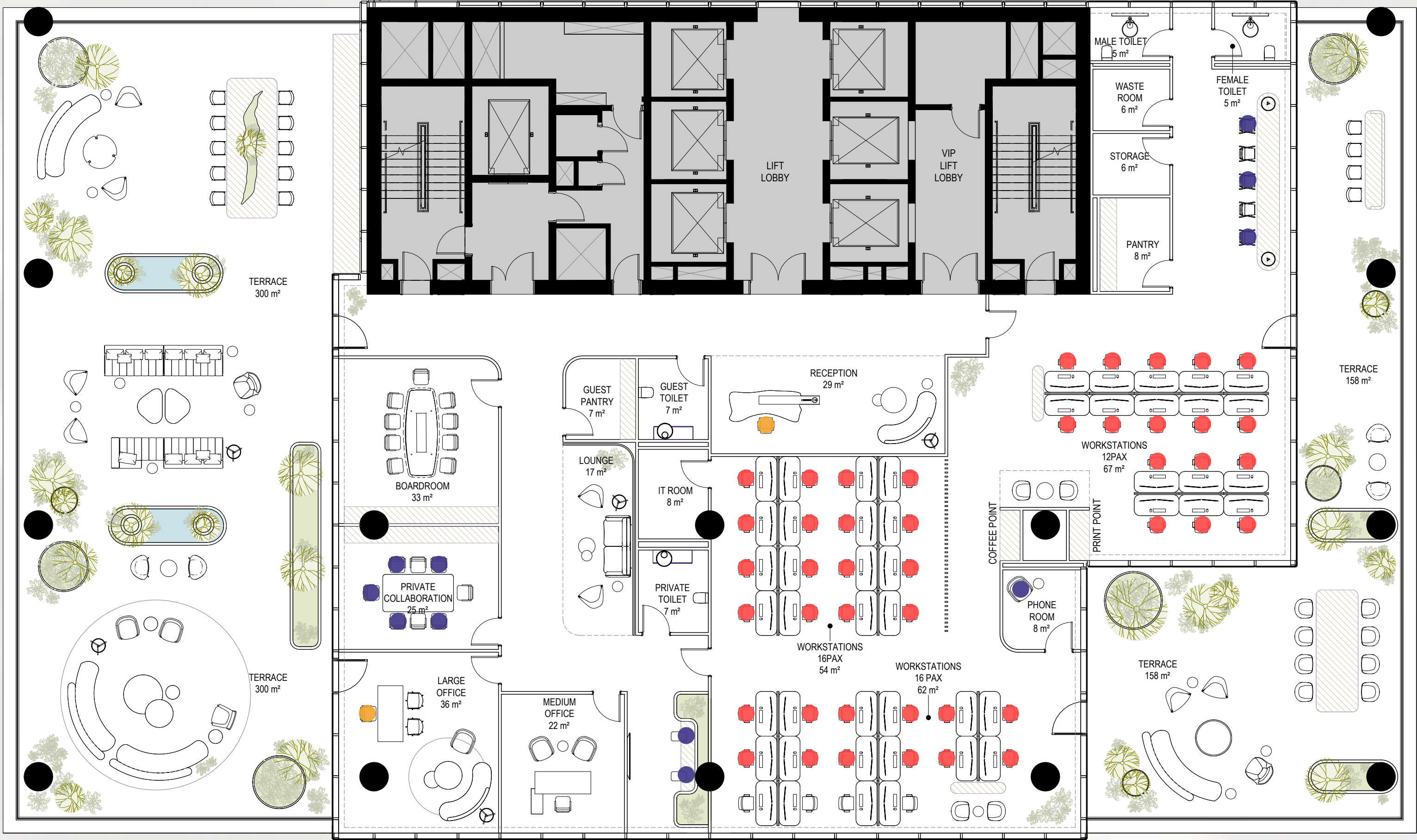
SUPPORT SPACES

- 1 Female Toilet
- 1 Male Toilet
- 1 Guest Toilet
- 1 Private Toilet
- 1 Coffee Point
- 1 Print Point
- 1 Pantry
- 1 Guest Pantry
- 1 Storage Room
- 1 IT Room
- 1 Waste Room

AREA CALCULATIONS

Usable Area: (W/O Toilet Rooms, IT Room)

TOTAL: 676 SQM  
Density: 1 : 10 SQM/Person



● 48 Workstations      ● 03 Offices and Reception      ● 11 Hot Desks

# TEST FIT - SIMPLEX

## ULTRA- GRAND OFFICES

TOTAL HEADCOUNT: 70  
(W/O Meeting Rooms)

AMENITIES

- 1 Reception
- 1 Lounges
- 2 Terraces

OFFICES

- 1 Large Office
- 2 Medium Offices

WORKSTATIONS (LEFT TO RIGHT)

- Zone 1. Workstations 44pax
- Zone 2. Workstations 10pax
- 2 Phone Rooms
- 2 Focus Rooms

MEETING SPACES

- 1 Boardroom
- 1 Large Meeting Room
- 2 Medium Meeting Rooms
- 1 Small Meeting Room
- 1 Collaboration Room
- 1 Lounge Meeting Room

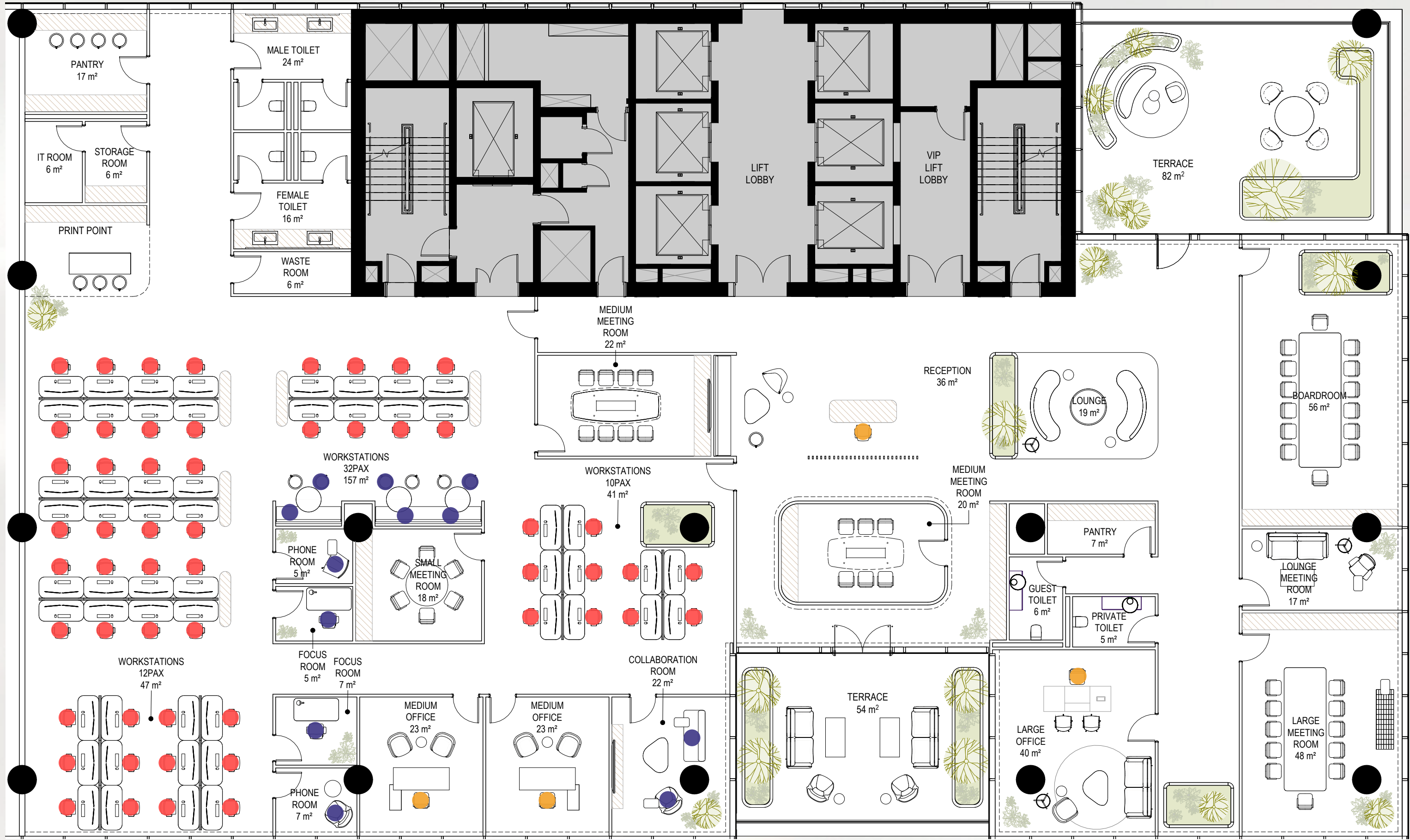
SUPPORT SPACES

- 1 Female Washroom
- 1 Male Washroom
- 1 Guets Toilet
- 1 Private Toilet
- 1 Print Point
- 1 Coffee Point
- 2 Pantries
- 1 Storage Room
- 1 IT Room
- 1 Waster Room

AREA CALCULATIONS

Usable Area: (W/O Toilet Rooms, IT Room)

TOTAL: 950 SQM  
Density: 1:13.5 SQM/Person



● 54 Workstations      ● 04 Offices and Reception      ● 12 Hot Desks