



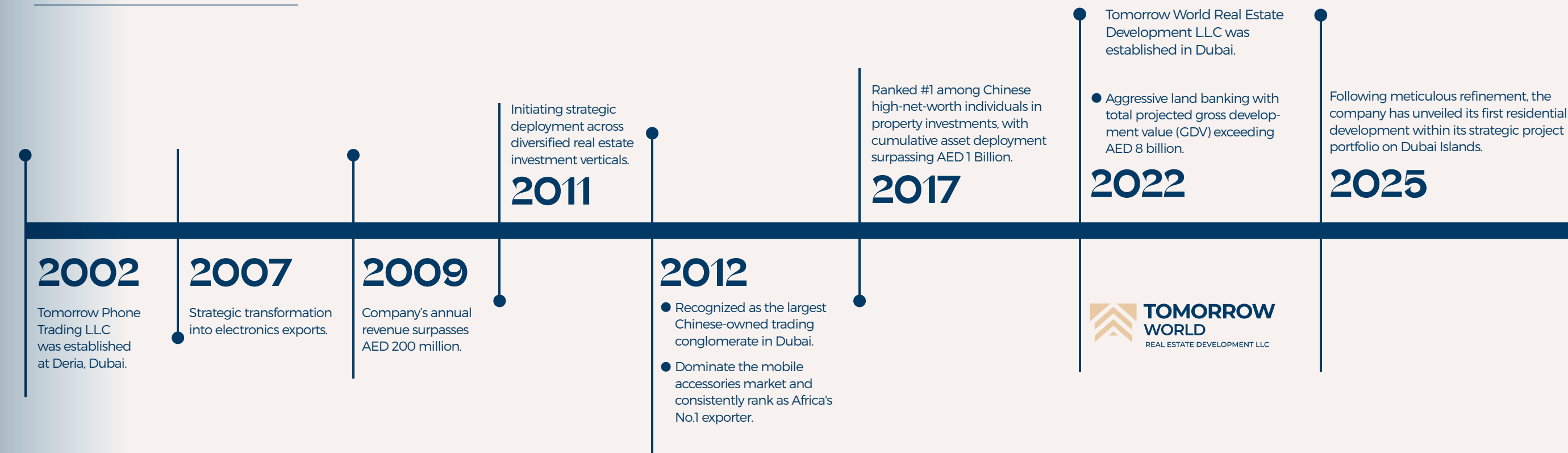
# WHY INVESTING IN DUBAI

# ABOUT TOMORROW WORLD

Established in 2022 and headquartered in Dubai, United Arab Emirates, Tomorrow World Properties is an innovative boutique real estate developer and a distinguished subsidiary of the Tomorrow World Group - a Dubai-based conglomerate with more than 20-year legacy (since 2002) of global trading excellence and strategic investments.

## OUR JOURNEY

### MILESTONES TIMELINE



-   
Unparalleled Tax&Currency Benefits
-   
Thriving Tourism Industry
-   
Economic Dynamism & Diversification
-   
Safety & Stable City
-   
Government Initiatives (Dubai 2040 Urban Master Plan & Dubai Economic Agenda 'D33')
-   
World Class Free Zones & Infrastructure
-   
Multicultural Society & Global Community
-   
Growing Population & Booming Rental Market
-   
Competitive Property Prices & Strong Return On Investment
-   
Regulated Market & Various Visa Options



# ABOUT TOMORROW COMMERCIAL TOWER

## STRATEGIC LOCATION

Nestled in the city's one of the most active business hubs - International City, the project offers unparalleled connectivity with easy access to every major attraction Dubai has to offer.

International City 1 Metro Station (Upcoming) . [ 1 min ]

Dubai International Airport . [ 15 mins ]

Dubai Creek Harbor . [ 15 mins ]

Dubai Mall/ Downtown/ Business Bay . [ 20 mins ]

Burj Al Arab . [ 30 mins ]

Palm Jumeirah/ Dubai Islands . [ 35 mins ]





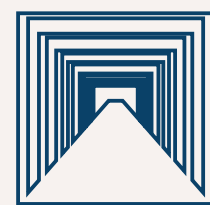
# TOP 10 PROJECT VALUES



All-glass curtain wall



Smart building systems



Five-star double-height  
grand lobby



Ample dedicated &  
public parking spaces



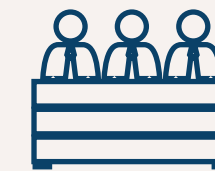
At CBD main road &  
only 400 meters to metro station



Abundant tenant resources – Dubai's  
leading occupancy rates & ROI



Each unit features a private bathroom &  
a dedicated pantry



Direct developer-operated  
property management



Four high-speed OTIS elevators  
(18-person capacity each)



Developer's headquarter – Guarantees high-quality  
delivery & construction progress





MAIN ENTRANCE



GRAND LOBBY





PUBLIC AREAS & CORRIDOR



PUBLIC WASHROOM





YOUR DREAM OFFICE SPACE!  
MODERN OFFICE.  
TOP-NOTCH FACILITIES



THE BEST PLACE TO WORK!  
EXPERIENCE EFFICIENCY IN COMFORT





TOMORROW'S  
SMART SHOPPING CHOICE



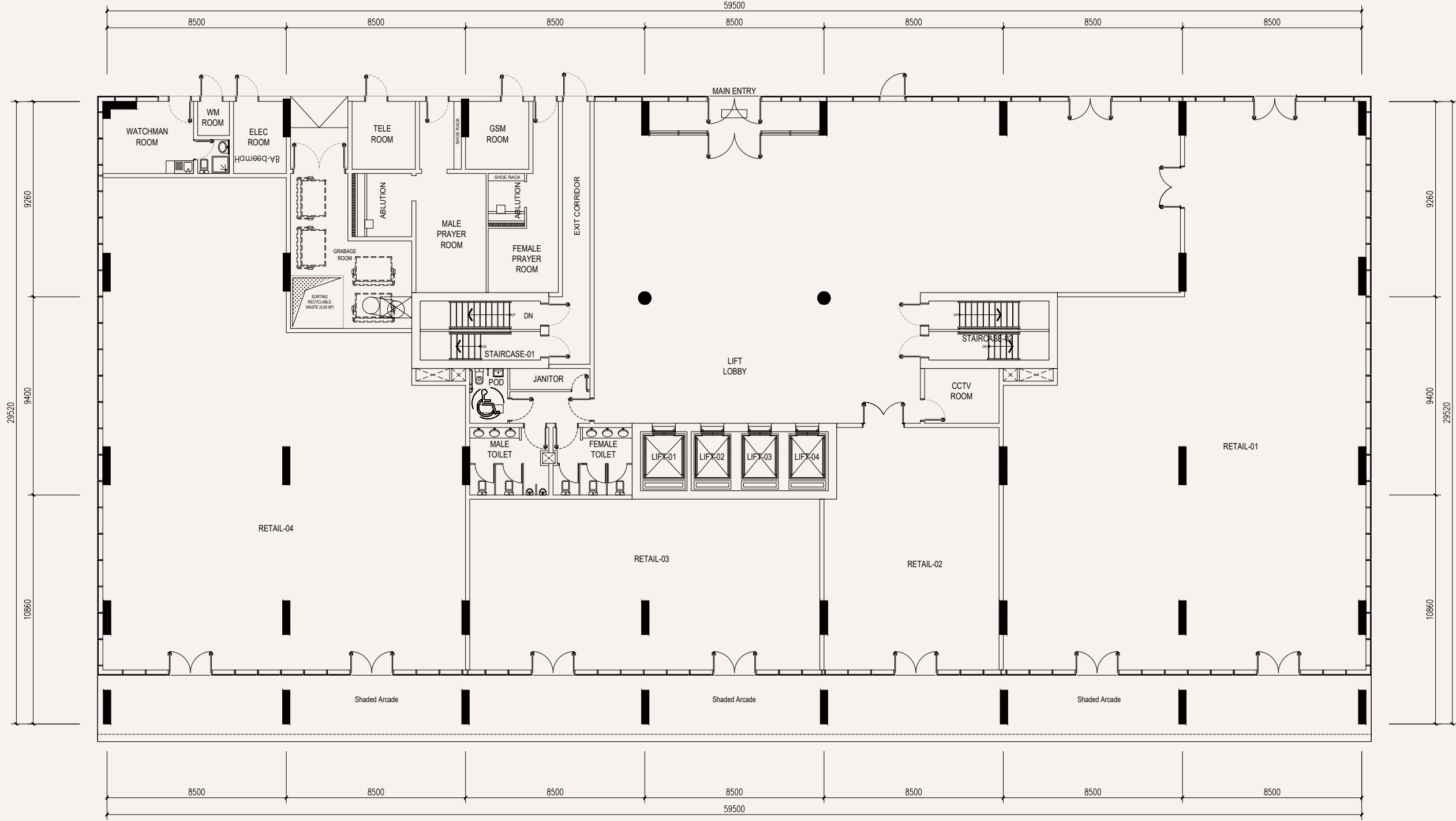
TOMORROW COMMERCIAL

BUILD YOUR SUCCESS STORY  
HERE!



FLOOR PLANS

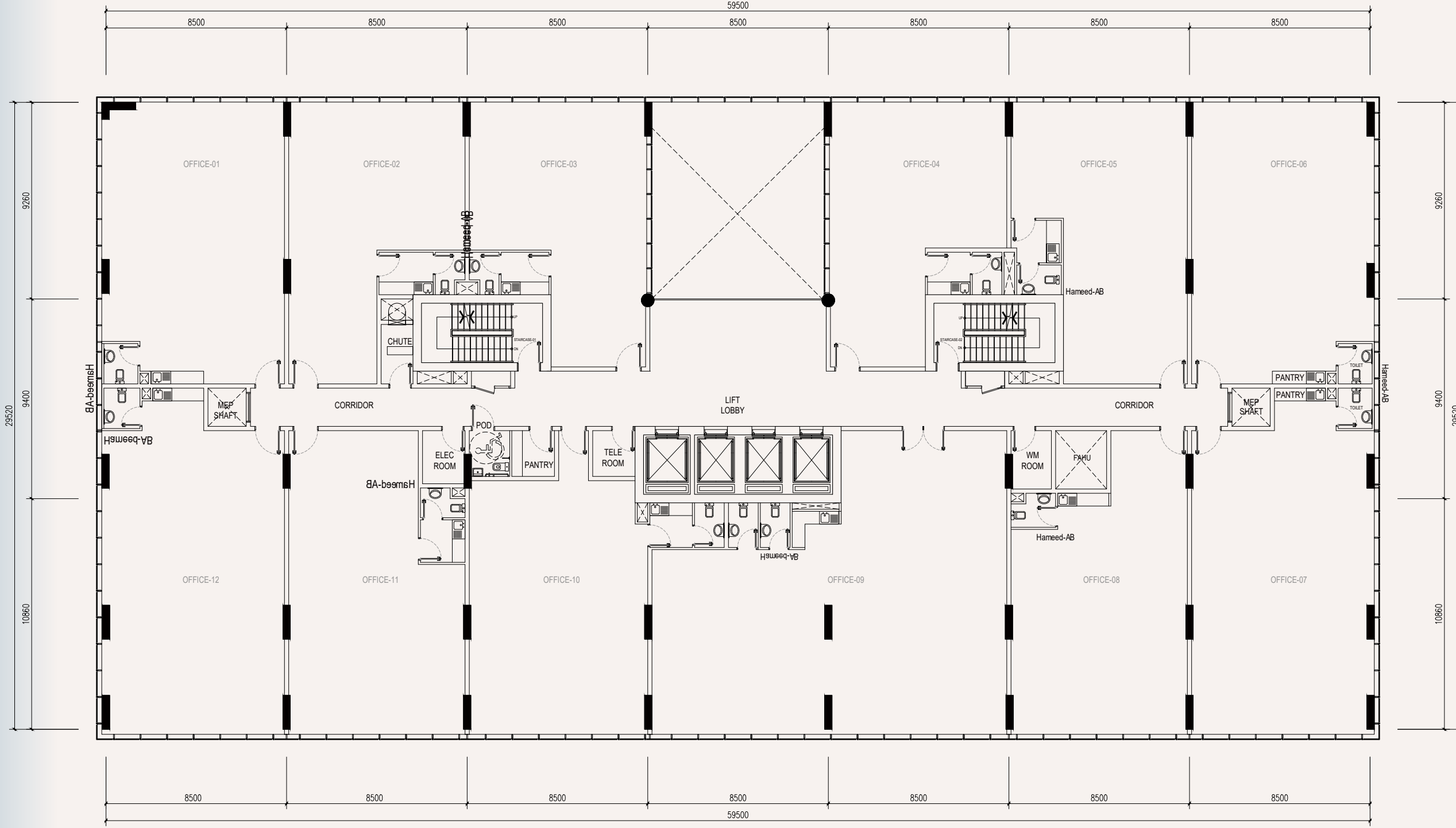
Burj Khalifa



Main Road

G FLOOR

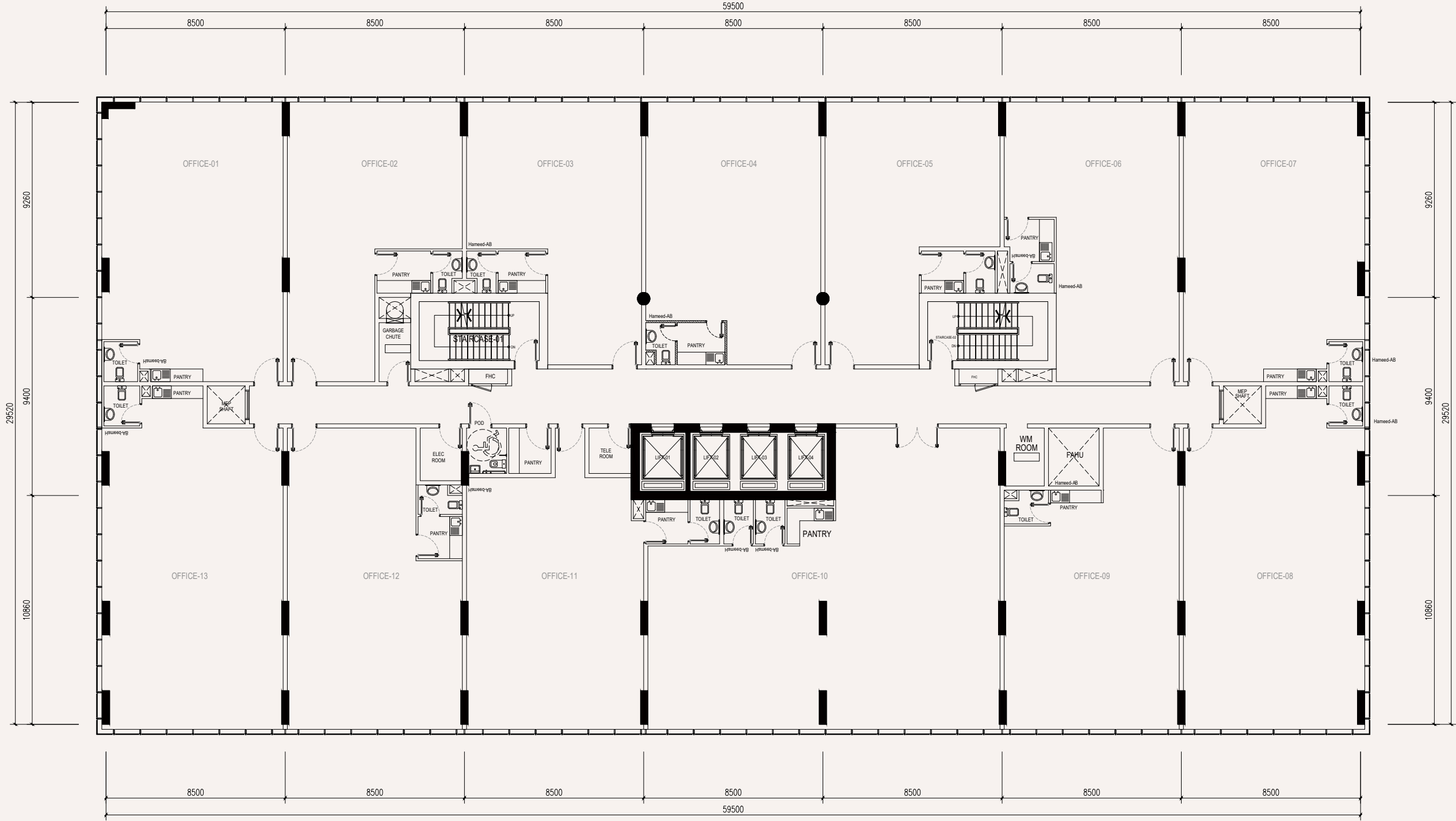
Burj Khalifa



Main Road

1ST FLOOR

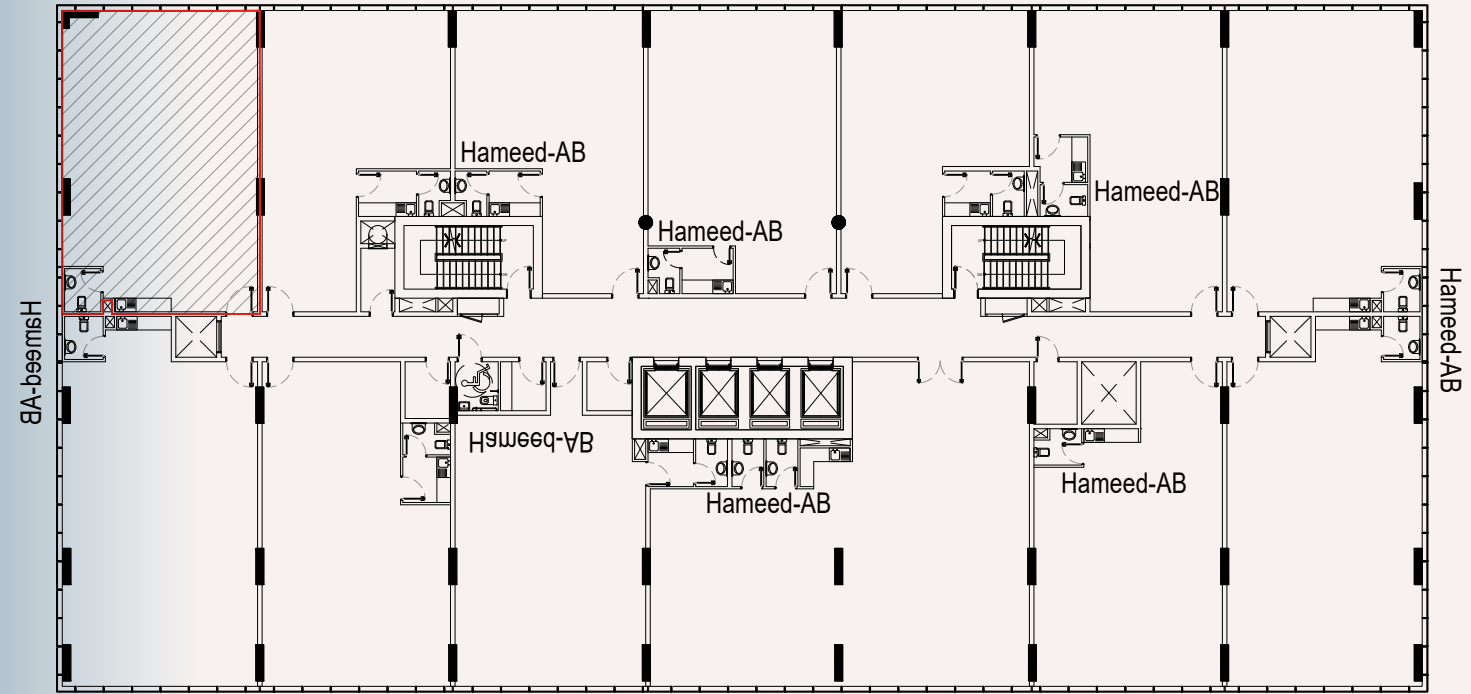




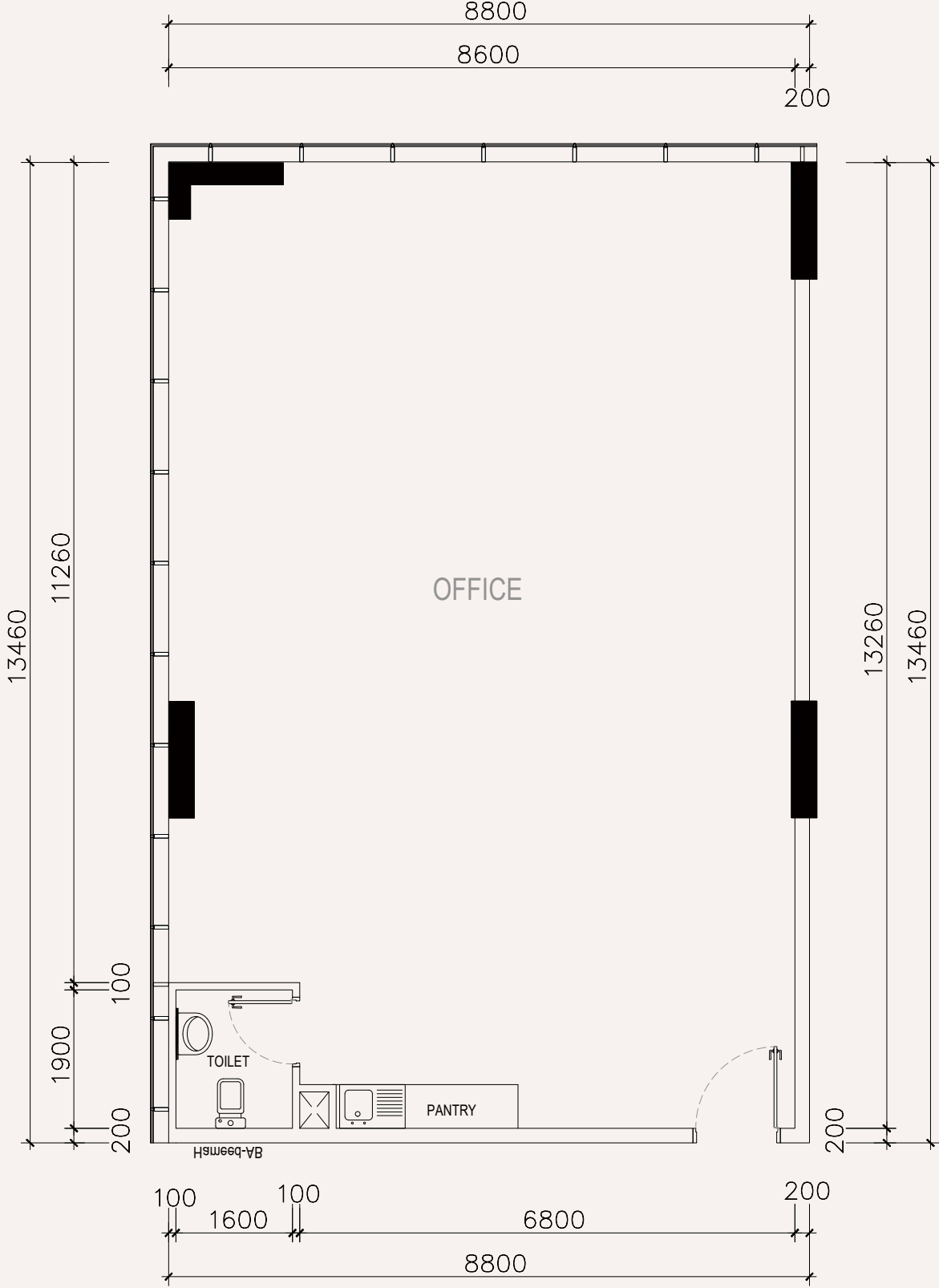
Main Road

TYPICAL FLOOR

# OFFICE LAYOUT 1

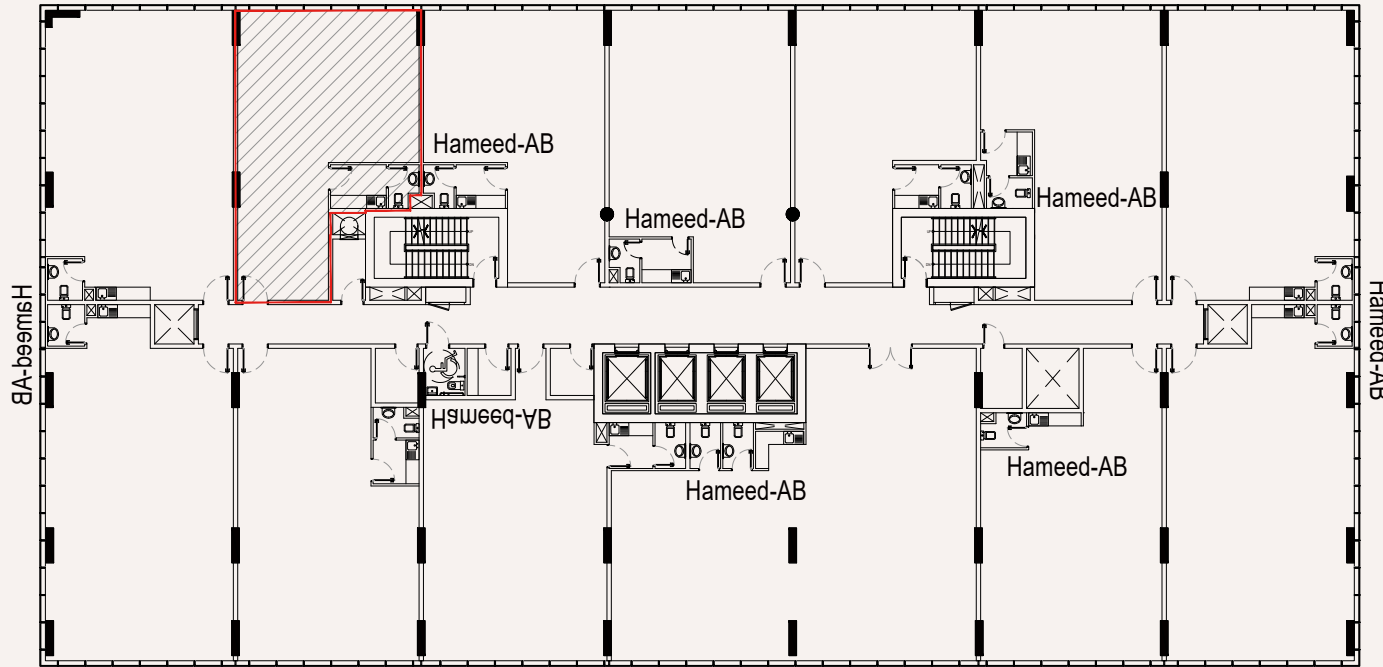


KEY PLAN

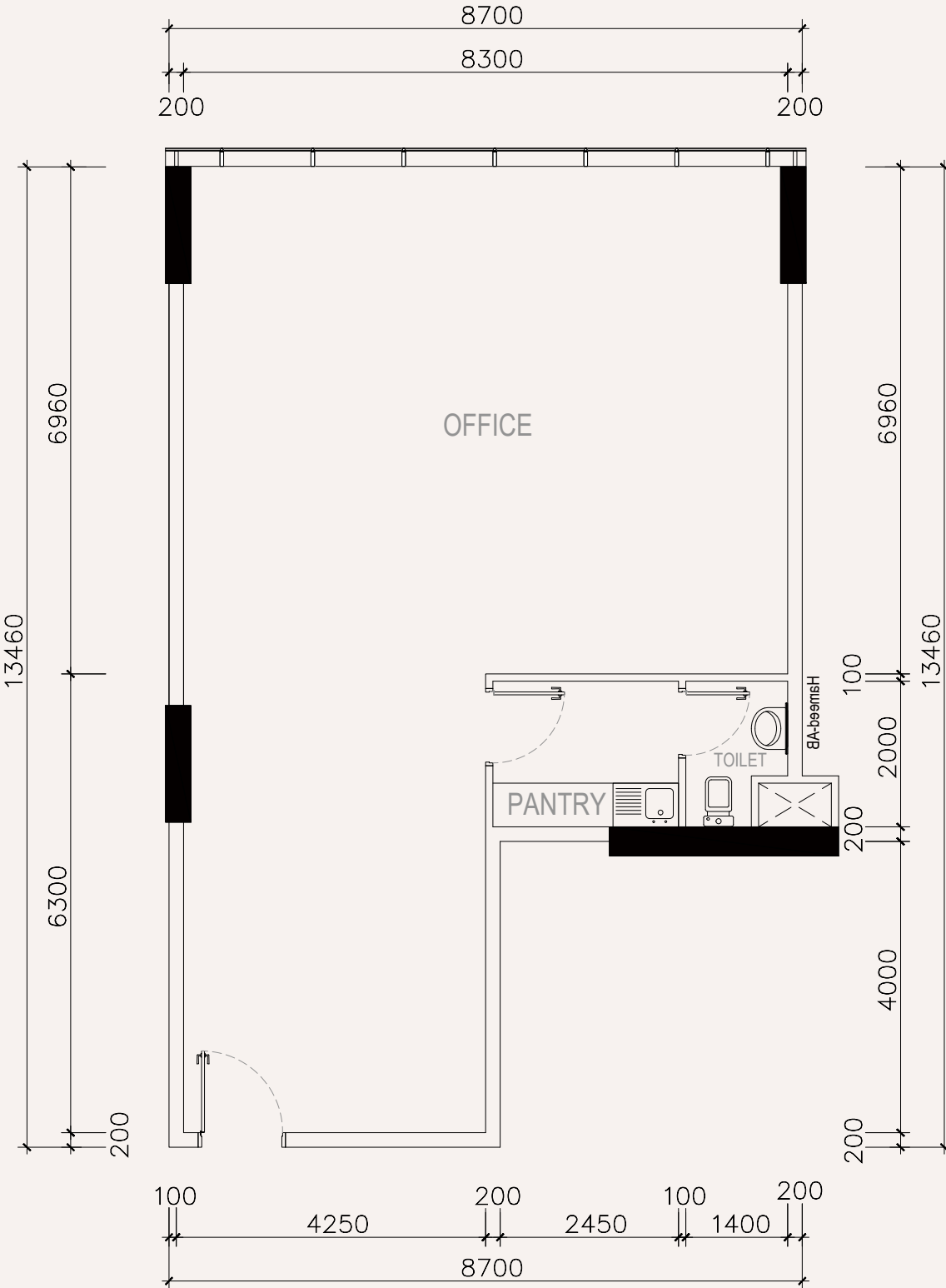




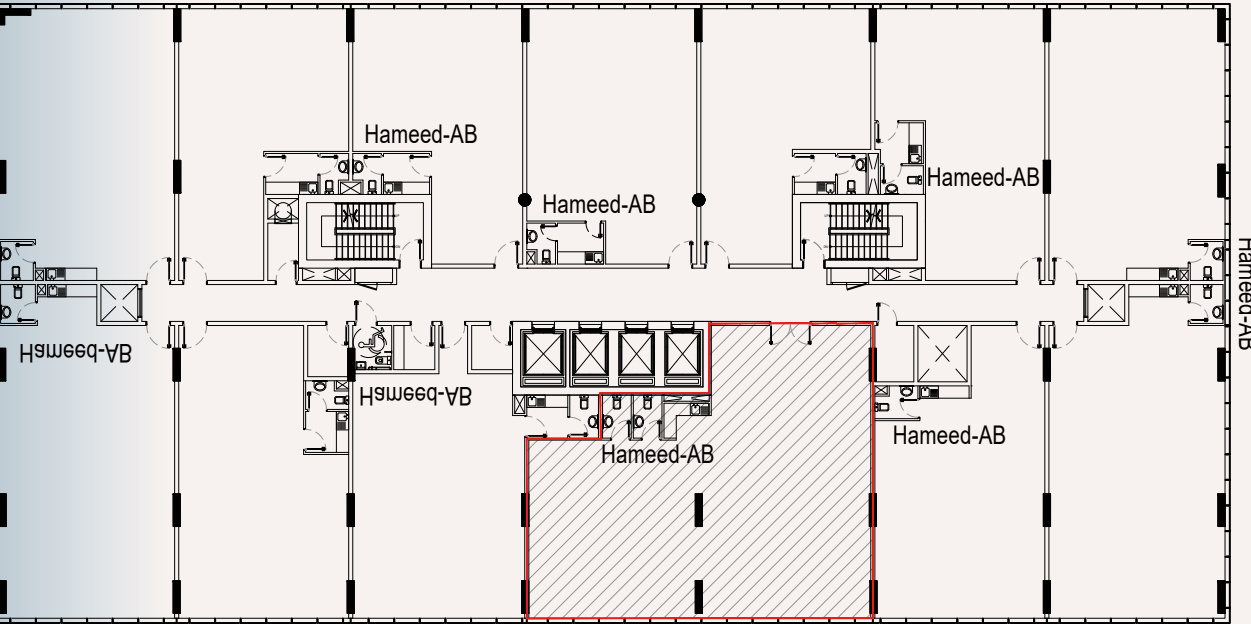
OFFICE LAYOUT 2



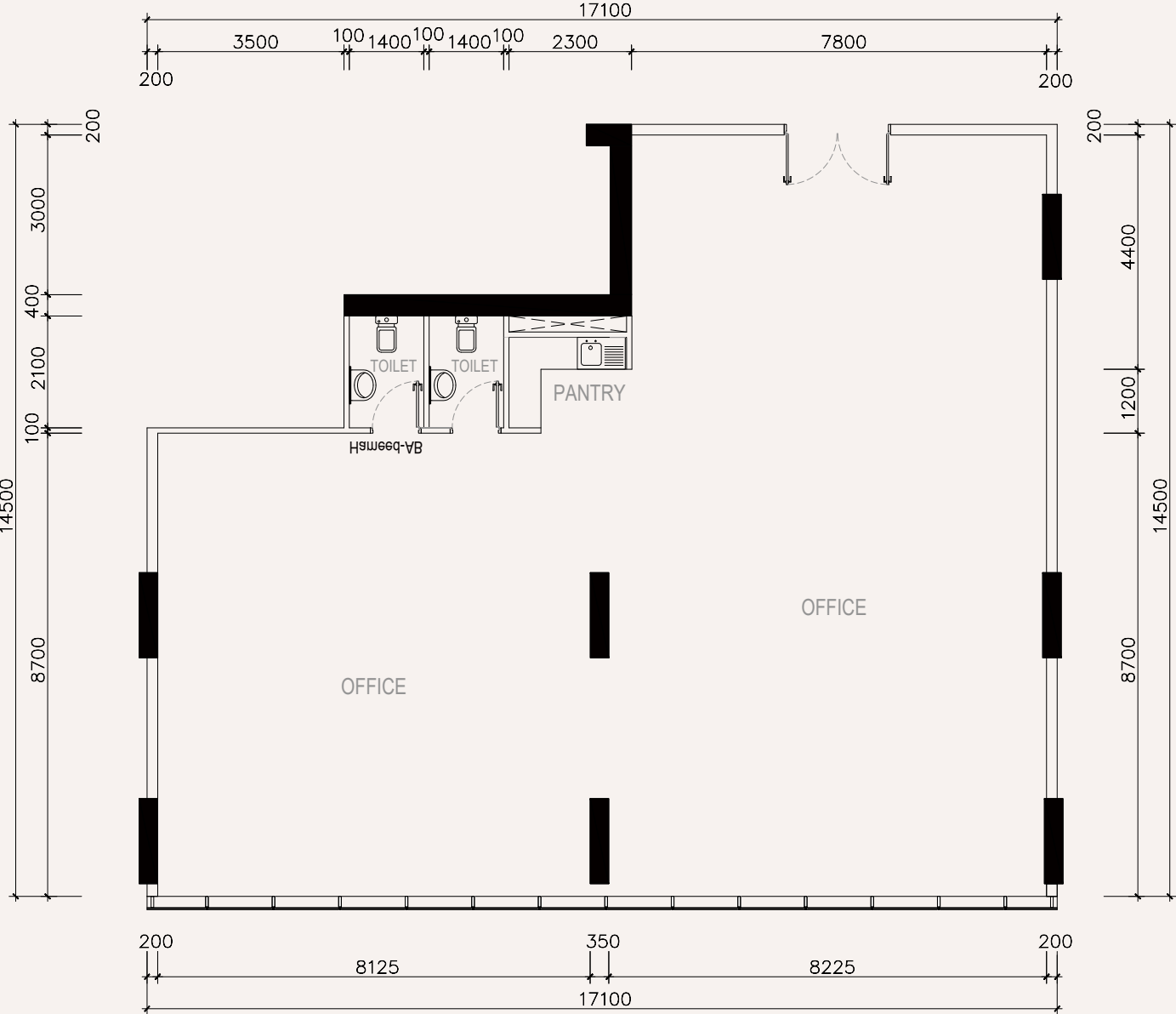
KEY PLAN



OFFICE LAYOUT 3



KEY PLAN





From startups to global corporations, Tomorrow Commercial Tower provides the ideal platform for businesses to flourish and expand. The vibrant commercial environment, region advanced property management facilities and sophisticated design create an unparalleled business experience.

