

THE LAYOUTS



ALTAY
HILLS

TOWNHOUSE C1

3 BEDROOM

THS - 3BD - C1



Plot : 186.6 m²

Building : 190.95 m²



GROUND FLOOR



FIRST FLOOR

GROUND FLOOR	81.55 M ²
FIRST FLOOR	109.4 M ²
BALCONY AREA	- M ²
FRONT YARD	14.65 M ²
BACK YARD	11.84 M ²
POOL AREA	36.93 M ²

NOTES:

- Measurements shown are approximate and excluding construction tolerances.
- Actual plot and unit dimensions may differ from those shown in this Form.
- All images and schematics are for illustrative purposes only, and may not accurately represent the final design, layout, or feature of the project.
- Unless otherwise specified, all furniture, fittings, and interior items shown are for illustration only and may not be included in the handover check list.
- Landscaping, exterior finishes, and surrounding infrastructure depicted in illustration are subject to change and may not exactly match the final delivered product.
- Additional costs for upgrades, modifications, or customizations that maybe requested by the buyer will be detailed in a separate agreement.
- The developer reserves the right to make changes, at its sole discretion, without any liability, until the final as-built status is achieved.



ALTAY
HILLS

TOWNHOUSE C2

3 BEDROOM

THS - 3BD - C2



Plot : 186.6 m2

Building : 187.96 m2

GROUND FLOOR	85.09 M ²
FIRST FLOOR	102.87 M ²
BALCONY AREA	-
FRONT YARD	18.38 M ²
BACK YARD	8.41 M ²
POOL AREA	35.05 M ²

- NOTES:
- Measurements shown are approximate and excluding construction tolerances.
 - Actual plot and unit dimensions may differ from those shown in this Form.
 - All images and schematics are for illustrative purposes only, and may not accurately represent the final design, layout, or feature of the project.
 - Unless otherwise specified, all furniture, fittings, and interior items shown are for illustration only and may not be included in the handover check list.
 - Landscaping, exterior finishes, and surrounding infrastructure depicted in illustration are subject to change and may not exactly match the final delivered product.
 - Additional costs for upgrades, modifications, or customizations that maybe requested by the buyer will be detailed in a separate agreement.
 - The developer reserves the right to make changes, at its sole discretion, without any liability, until the final as-built status is achieved.



GROUND FLOOR



FIRST FLOOR



ALTAY
HILLS

TOWNHOUSE A1

3 BEDROOM

THL - 3BD - A1



Plot : 280 m2

Building : 231.1 m2



GROUND FLOOR



FIRST FLOOR

GROUND FLOOR	107.07 M ²
FIRST FLOOR	124.04 M ²
BALCONY AREA	- M ²
FRONT YARD	- M ²
BACK YARD	52.24 M ²
POOL AREA	64.59 M ²

NOTES:

- Measurements shown are approximate and excluding construction tolerances.
- Actual plot and unit dimensions may differ from those shown in this Form.
- All images and schematics are for illustrative purposes only, and may not accurately represent the final design, layout, or feature of the project.
- Unless otherwise specified, all furniture, fittings, and interior items shown are for illustration only and may not be included in the handover check list.
- Landscaping, exterior finishes, and surrounding infrastructure depicted in illustration are subject to change and may not exactly match the final delivered product.
- Additional costs for upgrades, modifications, or customizations that maybe requested by the buyer will be detailed in a separate agreement.
- The developer reserves the right to make changes, at its sole discretion, without any liability, until the final as-built status is achieved.



ALTAY
HILLS

TOWNHOUSE B1

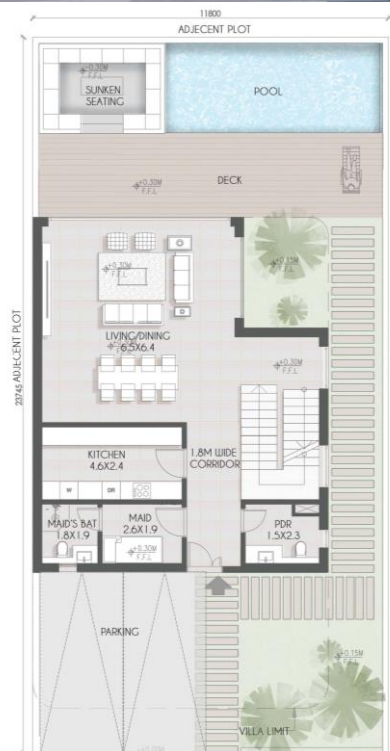
3 BEDROOM

THL - 3BD - B1



Plot : 280 m²

Building : 254.36 m²



GROUND FLOOR



FIRST FLOOR

GROUND FLOOR	105.1 M ²
FIRST FLOOR	149.41 M ²
BALCONY AREA	8.97 M ²
FRONT YARD	25.49 M ²
BACK YARD	26.8 M ²
POOL AREA	65.79 M ²

NOTES:

- Measurements shown are approximate and excluding construction tolerances.
- Actual plot and unit dimensions may differ from those shown in this Form.
- All images and schematics are for illustrative purposes only, and may not accurately represent the final design, layout, or feature of the project.
- Unless otherwise specified, all furniture, fittings, and interior items shown are for illustration only and may not be included in the handover check list.
- Landscaping, exterior finishes, and surrounding infrastructure depicted in illustration are subject to change and may not exactly match the final delivered product.
- Additional costs for upgrades, modifications, or customizations that maybe requested by the buyer will be detailed in a separate agreement.
- The developer reserves the right to make changes, at its sole discretion, without any liability, until the final as-built status is achieved.



ALTAY
HILLS

TOWNHOUSE E1

4 BEDROOM

THXL-4BD-E1



Plot : 280 m²

Building : 273.14 m²



GROUND FLOOR



FIRST FLOOR

GROUND FLOOR	109.45 M ²
FIRST FLOOR	163.69 M ²
BALCONY AREA	9.03 M ²
FRONT YARD	27.19 M ²
BACK YARD	18.87 M ²
POOL AREA	64.59 M ²

NOTES:

- Measurements shown are approximate and excluding construction tolerances.
- Actual plot and unit dimensions may differ from those shown in this Form.
- All images and schematics are for illustrative purposes only, and may not accurately represent the final design, layout, or feature of the project.
- Unless otherwise specified, all furniture, fittings, and interior items shown are for illustration only and may not be included in the handover check list.
- Landscaping, exterior finishes, and surrounding infrastructure depicted in illustration are subject to change and may not exactly match the final delivered product.
- Additional costs for upgrades, modifications, or customizations that maybe requested by the buyer will be detailed in a separate agreement.
- The developer reserves the right to make changes, at its sole discretion, without any liability, until the final as-built status is achieved.



ALTAY
HILLS

TOWNHOUSE F1

4 BEDROOM

THL - 4BD - F1



Plot : 280 m2
Building : 259.41 m2

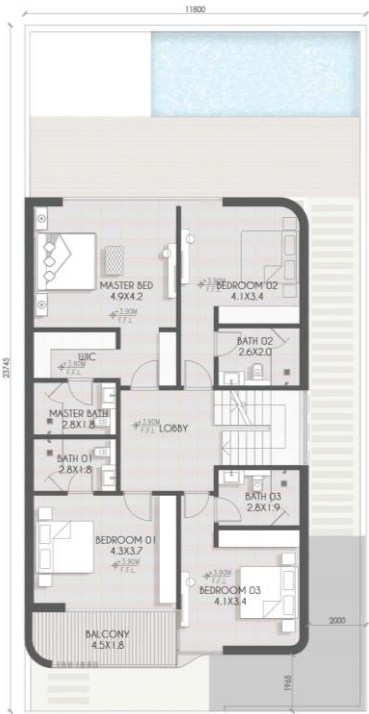
GROUND FLOOR	109.79 M ²
FIRST FLOOR	149.62 M ²
BALCONY AREA	8.97 M ²
FRONT YARD	25.49 M ²
BACK YARD	26.80 M ²
POOL AREA	65.79 M ²

NOTES:

- Measurements shown are approximate and excluding construction tolerances.
- Actual plot and unit dimensions may differ from those shown in this Form.
- All images and schematics are for illustrative purposes only, and may not accurately represent the final design, layout, or feature of the project.
- Unless otherwise specified, all furniture, fittings, and interior items shown are for illustration only and may not be included in the handover check list.
- Landscaping, exterior finishes, and surrounding infrastructure depicted in illustration are subject to change and may not exactly match the final delivered product.
- Additional costs for upgrades, modifications, or customizations that maybe requested by the buyer will be detailed in a separate agreement.
- The developer reserves the right to make changes, at its sole discretion, without any liability, until the final as-built status is achieved.



GROUND FLOOR



FIRST FLOOR



ALTAY
HILLS

TWIN VILLA

4 BEDROOM

TW 4 - 4 BD - MODERN



Plot : A2 312 / A1 320 m²

Building : 380.44 m² / 385.15



GROUND FLOOR



FIRST FLOOR

GROUND FLOOR	180.84 M ²
FIRST FLOOR	199.6 M ²
BALCONY AREA	28.46 M ²
FRONT YARD	21.89 M ²
BACK YARD	23.55 M ²
POOL AREA	74.11 M ²

- NOTES:
- Measurements shown are approximate and excluding construction tolerances.
 - Actual plot and unit dimensions may differ from those shown in this Form.
 - All images and schematics are for illustrative purposes only, and may not accurately represent the final design, layout, or feature of the project.
 - Unless otherwise specified, all furniture, fittings, and interior items shown are for illustration only and may not be included in the handover check list.
 - Landscaping, exterior finishes, and surrounding infrastructure depicted in illustration are subject to change and may not exactly match the final delivered product.
 - Additional costs for upgrades, modifications, or customizations that maybe requested by the buyer will be detailed in a separate agreement.
 - The developer reserves the right to make changes, at its sole discretion, without any liability, until the final as-built status is achieved.



ALTAY
HILLS

PRIVATE VILLA A1, D1

4 BEDROOM

PV 4 - 4 BD - D1

PV 4 - 4 BD - A1



Plot : 344.4 m²

Building : 429.9 m²



GROUND FLOOR



FIRST FLOOR

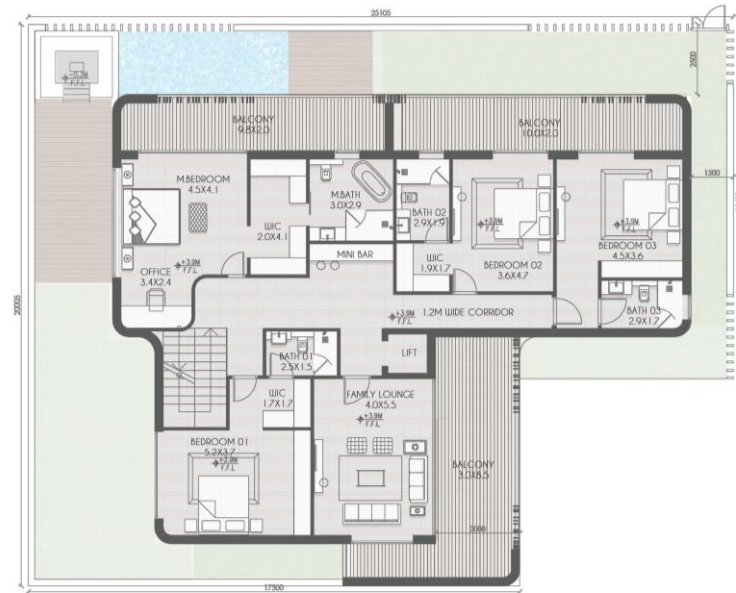
GROUND FLOOR	198.8 M ²
FIRST FLOOR	231.1 M ²
BALCONY AREA	51.43 M ²
FRONT YARD	40.84 M ²
BACK YARD	51.34 M ²
POOL AREA	41.38 M ²

NOTES:

- Measurements shown are approximate and excluding construction tolerances.
- Actual plot and unit dimensions may differ from those shown in this Form.
- All images and schematics are for illustrative purposes only, and may not accurately represent the final design, layout, or feature of the project.
- Unless otherwise specified, all furniture, fittings, and interior items shown are for illustration only and may not be included in the handover check list.
- Landscaping, exterior finishes, and surrounding infrastructure depicted in illustration are subject to change and may not exactly match the final delivered product.
- Additional costs for upgrades, modifications, or customizations that maybe requested by the buyer will be detailed in a separate agreement.
- The developer reserves the right to make changes, at its sole discretion, without any liability, until the final as-built status is achieved.

4 BED ROOM

Building : 495.03 m2



FIRST FLOOR

GROUND FLOOR	222.13 M ²
FIRST FLOOR	272.9 M ²
BALCONY AREA	66.25 M ²
FRONT YARD	79.0 M ²
BACK YARD	49.35 M ²
POOL AREA	79.4 M ²

- Measurements shown are approximate and excluding construction tolerances.
- Actual plot and unit dimensions may differ from those shown in this Form.
- All images and schematics are for illustrative purposes only, and may not accurately represent the final design, layout, or feature of the project.
- Unless otherwise specified, all furniture, fittings, and interior items shown are for illustration only and may not be included in the handover check list.
- Landscaping, exterior finishes, and surrounding infrastructure depicted in illustration are subject to change and may not exactly match the final delivered product.
- Additional costs for upgrades, modifications, or customizations that maybe requested by the buyer will be detailed in a separate agreement.
- The developer reserves the right to make changes, at its sole discretion, without any liability, until the final as-built status is achieved.



-The developer reserves the right to make changes, at its sole discretion, without any liability, until the final as-built status is achieved.

GROUND FLOOR

FIRST FLOOR



ALTAY
HILLS

PRIVATE VILLA E1,E2,E3,E4

5 BEDROOM

P V 5 - 5 B D - E 1



Plot : 516.6 m2
Building : 571.35 m2



GROUND FLOOR



FIRST FLOOR

GROUND FLOOR	257.95 M ²
FIRST FLOOR	313.4 M ²
BALCONY AREA	56.28 M ²
FRONT YARD	24.15 M ²
BACK YARD	118.62 M ²
POOL AREA	92.98 M ²

NOTES:

- Measurements shown are approximate and excluding construction tolerances.
- Actual plot and unit dimensions may differ from those shown in this Form.
- All images and schematics are for illustrative purposes only, and may not accurately represent the final design, layout, or feature of the project.
- Unless otherwise specified, all furniture, fittings, and interior items shown are for illustration only and may not be included in the handover check list.
- Landscaping, exterior finishes, and surrounding infrastructure depicted in illustration are subject to change and may not exactly match the final delivered product.
- Additional costs for upgrades, modifications, or customizations that maybe requested by the buyer will be detailed in a separate agreement.
- The developer reserves the right to make changes, at its sole discretion, without any liability, until the final as-built status is achieved.



ALTAY
HILLS

MANSION F1

6 BEDROOM

M N 6 - 6 B D - F 1 - MODERN



Plot : 710 m2

Building : 793.75 m2



GROUND FLOOR



FIRST FLOOR

GROUND FLOOR	345.92 M ²
FIRST FLOOR	447.83 M ²
BALCONY AREA	124.9 M ²
FRONT YARD	109.40 M ²
BACK YARD	189.7 M ²
POOL AREA	121.15 M ²

NOTES:

- Measurements shown are approximate and excluding construction tolerances.
- Actual plot and unit dimensions may differ from those shown in this Form.
- All images and schematics are for illustrative purposes only, and may not accurately represent the final design, layout, or feature of the project.
- Unless otherwise specified, all furniture, fittings, and interior items shown are for illustration only and may not be included in the handover check list.
- Landscaping, exterior finishes, and surrounding infrastructure depicted in illustration are subject to change and may not exactly match the final delivered product.
- Additional costs for upgrades, modifications, or customizations that maybe requested by the buyer will be detailed in a separate agreement.
- The developer reserves the right to make changes, at its sole discretion, without any liability, until the final as-built status is achieved.



ALTAY
HILLS

MANSION H1

6 BEDROOM

M N 6 - 6 B D - H 1 - MODERN



Plot : 607.78 m2

Building : 648.74 m2



GROUND FLOOR



FIRST FLOOR

GROUND FLOOR	309.12 M ²
FIRST FLOOR	339.62 M ²
BALCONY AREA	40.13 M ²
FRONT YARD	55.54 M ²
BACK YARD	132.02 M ²
POOL AREA	82.87 M ²

- NOTES:
- Measurements shown are approximate and excluding construction tolerances.
 - Actual plot and unit dimensions may differ from those shown in this Form.
 - All images and schematics are for illustrative purposes only, and may not accurately represent the final design, layout, or feature of the project.
 - Unless otherwise specified, all furniture, fittings, and interior items shown are for illustration only and may not be included in the handover check list.
 - Landscaping, exterior finishes, and surrounding infrastructure depicted in illustration are subject to change and may not exactly match the final delivered product.
 - Additional costs for upgrades, modifications, or customizations that maybe requested by the buyer will be detailed in a separate agreement.
 - The developer reserves the right to make changes, at its sole discretion, without any liability, until the final as-built status is achieved.

THANK YOU

ALTAY
HILLS