

4 BED UNIT PLAN
TYPE - C

SALEABLE AREA

Suite Area - 4,573.03 SQ. FT.

Balcony - 132.93 SQ. FT.

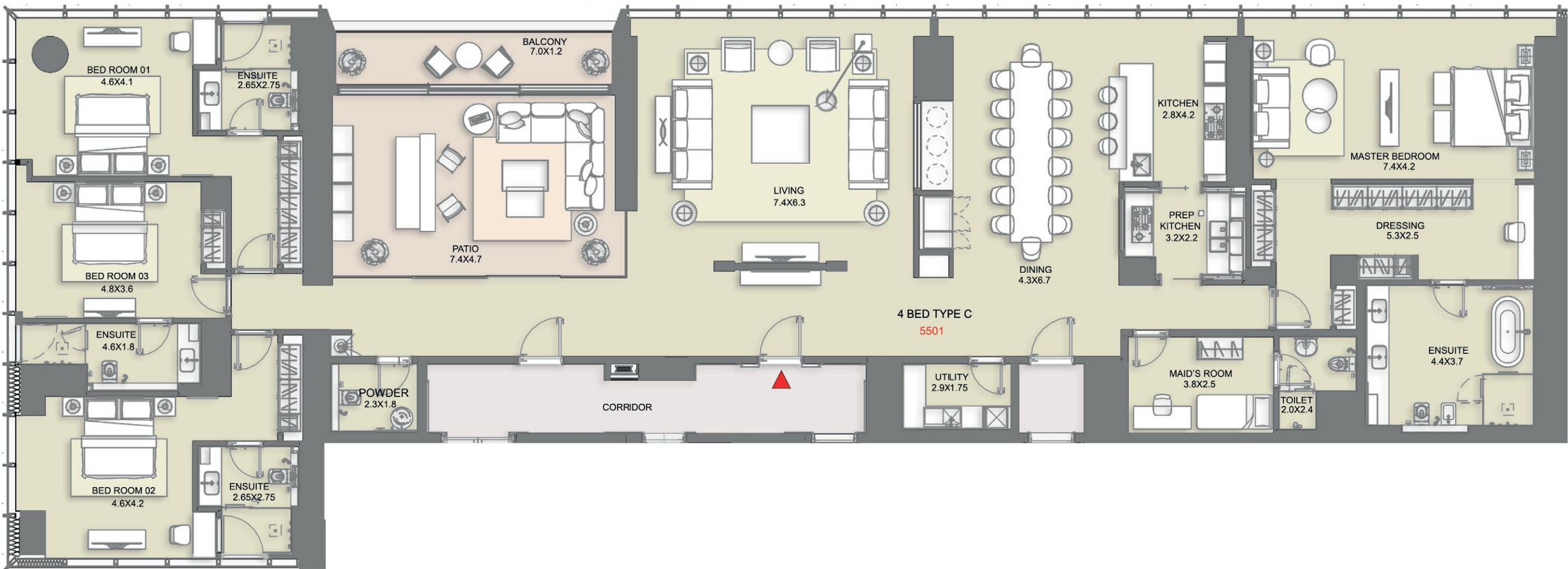
Total Unit - 4,705.96 SQ. FT.

Additional Staff Accomodation - 800.00 SQ. FT.

Additional Store - 865.00 SQ. FT.

Total Saleable Area - 6,370.96 SQ. FT.

Total Number of Units - 1



1. All dimensions are in metric, measured to wall finishes. 2. All materials, dimensions & drawings are approximate. 3. Information is subject to change without notice, at developer's absolute discretion. 4. Actual area may vary from the stated area. 5. Drawing are not to scale. 6. All images used are for illustrative purpose only and do not represent the actual size, features, and furnishings. The views shown vary by floor. 7. The specifications, fittings developer reserves the right to make revisions/ alterations, at its absolute discretion, without any liability whatsoever.

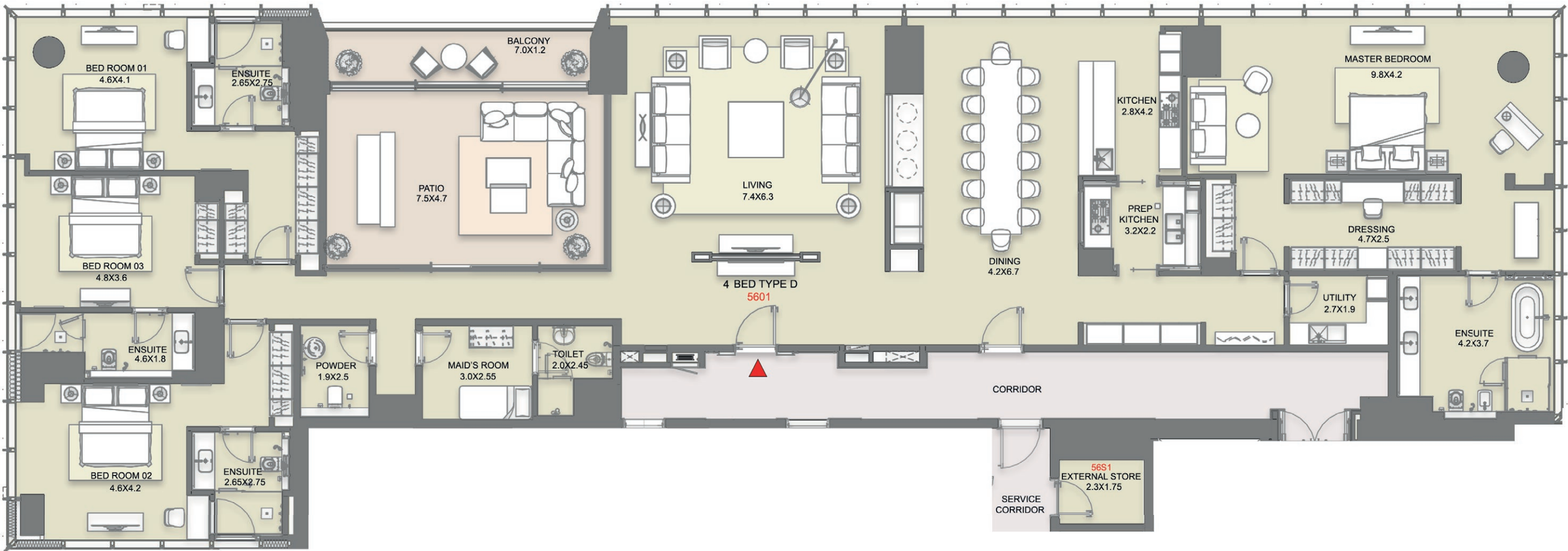
4 BED UNIT PLAN
TYPE - D

SALEABLE AREA

Suite Area - 4,640.05 SQ. FT.
Balcony - 131.32 SQ. FT.
Total Unit - 4,771.37 SQ. FT.

External Store at Same Level - 53.17 SQ. FT.
Additional Staff Accomodation - 821.00 SQ. FT.
Additional Store - 575.00 SQ. FT.
Total Saleable Area - 6,220.54 SQ. FT.

Total Number of Units - 1



1. All dimensions are in metric, measured to wall finishes. 2. All materials, dimensions & drawings are approximate. 3. Information is subject to change without notice, at developer's absolute discretion. 4. Actual area may vary from the stated area. 5. Drawing are not to scale. 6. All images used are for illustrative purpose only and do not represent the actual size, features, and furnishings. The views shown vary by floor. 7. The specifications, fittings developer reserves the right to make revisions/ alterations, at its absolute discretion, without any liability whatsoever.

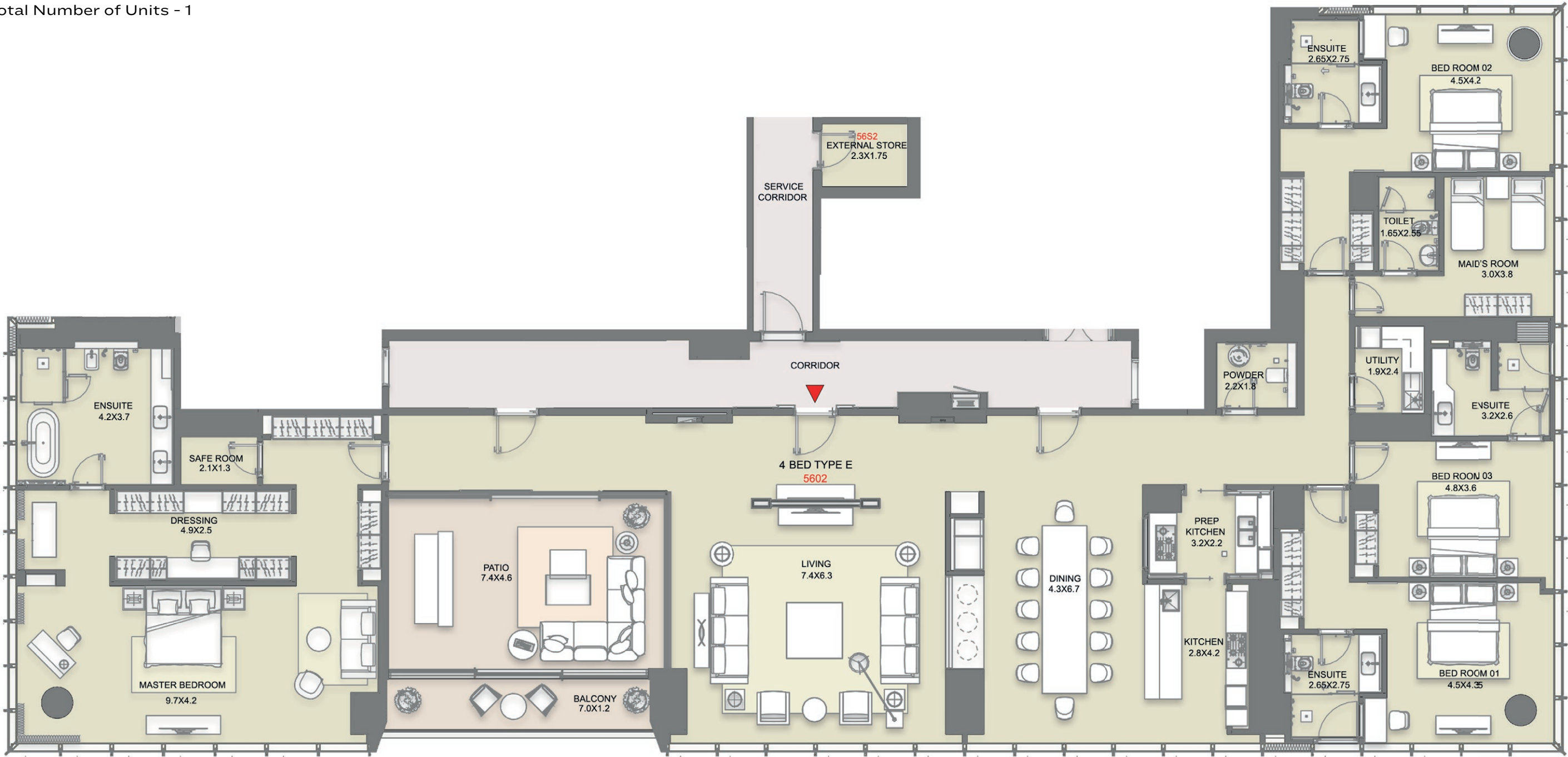
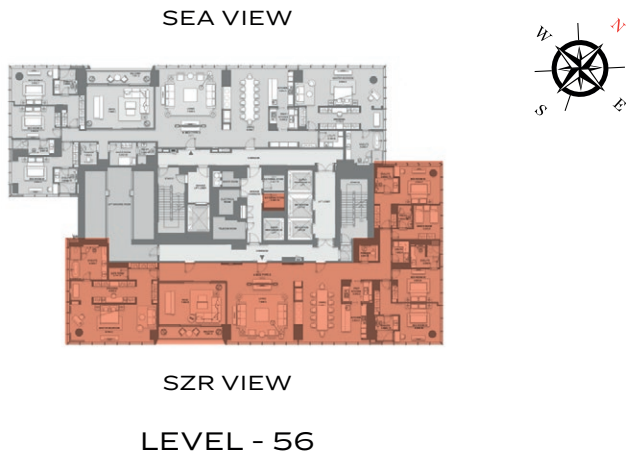
4 BED UNIT PLAN
TYPE - E

SALEABLE AREA

Suite Area - 4,968.03 SQ. FT.
Balcony - 129.49 SQ. FT.
Total Unit - 5,097.52 SQ. FT.

External Store at Same Level - 53.17 SQ. FT.
Additional Staff Accomodation - 725.00 SQ. FT.
Total Saleable Area - 5,875.69 SQ. FT.

Total Number of Units - 1



1. All dimensions are in metric, measured to wall finishes. 2. All materials, dimensions & drawings are approximate. 3. Information is subject to change without notice, at developer's absolute discretion. 4. Actual area may vary from the stated area. 5. Drawing are not to scale. 6. All images used are for illustrative purpose only and do not represent the actual size, features, and furnishings. The views shown vary by floor. 7. The specifications, fittings developer reserves the right to make revisions/ alterations, at its absolute discretion, without any liability whatsoever.

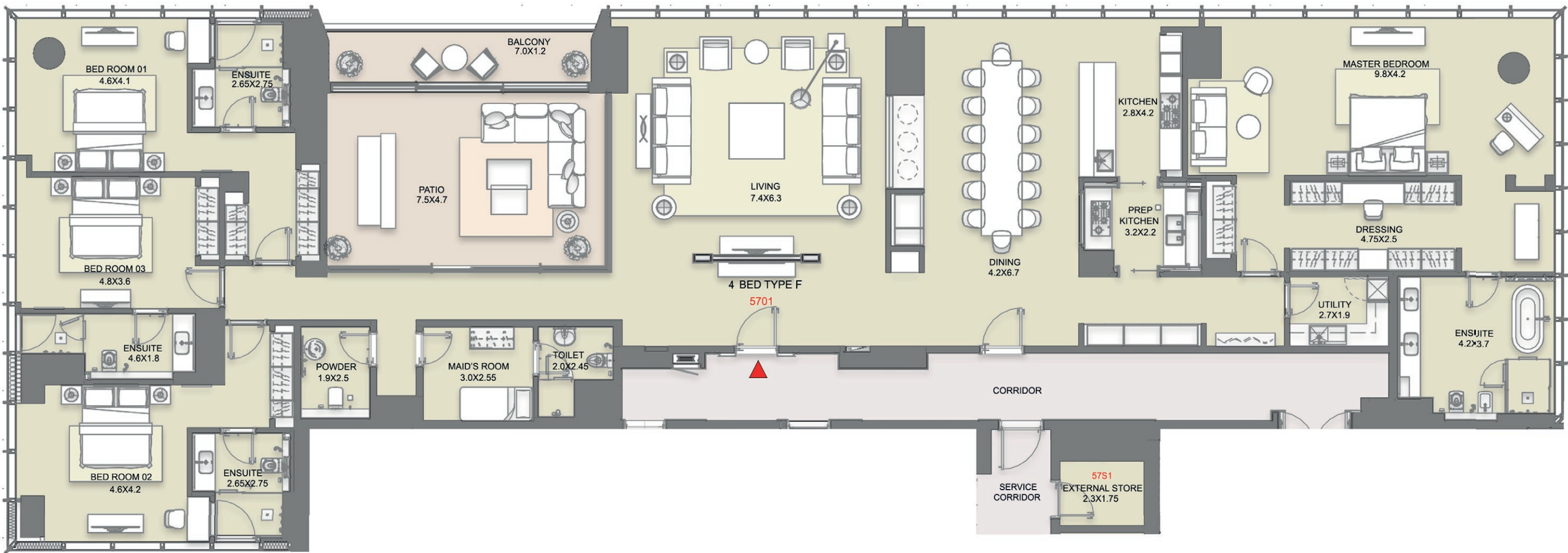
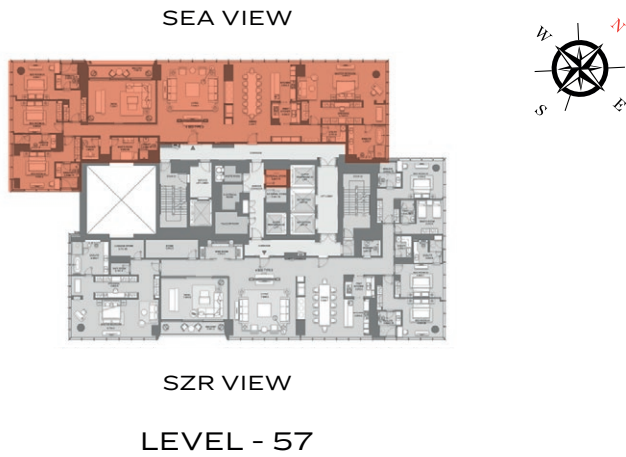
4 BED UNIT PLAN
TYPE - F

SALEABLE AREA

Suite Area - 4,635.98 SQ. FT.
Balcony - 133.04 SQ. FT.
Total Unit - 4,769.02 SQ. FT.

External Store at Same Level - 53.17 SQ. FT.
Additional Staff Accomodation - 910.00 SQ. FT.
Additional Store - 985.00 SQ. FT.
Total Saleable Area - 6,717.19 SQ. FT.

Total Number of Units - 1



1. All dimensions are in metric, measured to wall finishes. 2. All materials, dimensions & drawings are approximate. 3. Information is subject to change without notice, at developer's absolute discretion. 4. Actual area may vary from the stated area. 5. Drawing are not to scale. 6. All images used are for illustrative purpose only and do not represent the actual size, features, and furnishings. The views shown vary by floor. 7. The specifications, fittings developer reserves the right to make revisions/ alterations, at its absolute discretion, without any liability whatsoever.

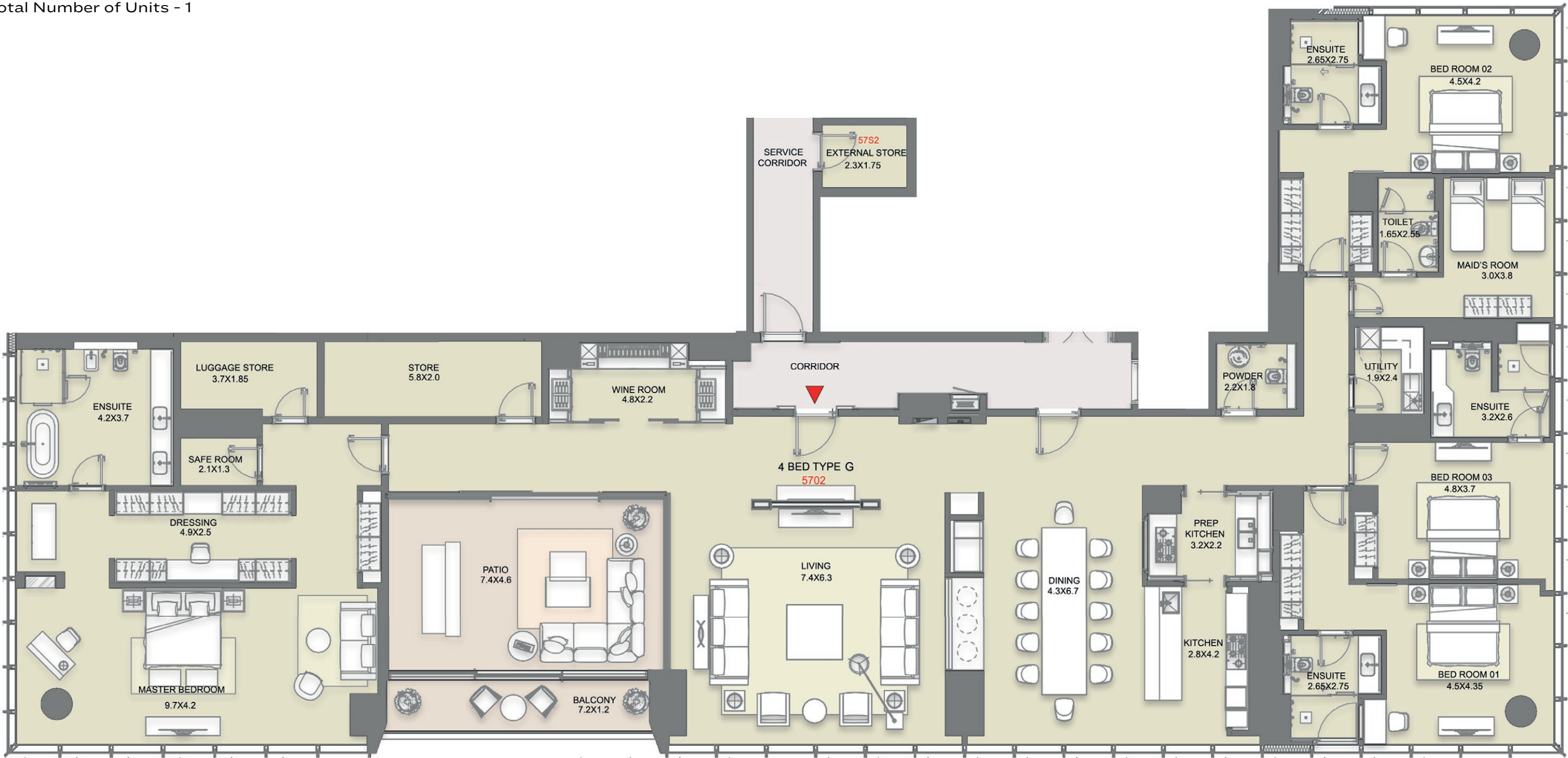
4 BED UNIT PLAN
TYPE - G

SALEABLE AREA

Suite Area - 5,309.19 SQ. FT.
Balcony - 129.49 SQ. FT.
Total Unit - 5,438.68 SQ. FT.

External Store at Same Level - 53.17 SQ. FT.
Additional Staff Accomodation - 745.00 SQ. FT.
Total Saleable Area - 6,236.85 SQ. FT.

Total Number of Units - 1



1. All dimensions are in metric, measured to wall finishes. 2. All materials, dimensions & drawings are approximate. 3. Information is subject to change without notice, at developer's absolute discretion. 4. Actual area may vary from the stated area. 5. Drawing are not to scale. 6. All images used are for illustrative purpose only and do not represent the actual size, features, and furnishings. The views shown vary by floor. 7. The specifications, fittings developer reserves the right to make revisions/ alterations, at its absolute discretion, without any liability whatsoever.

5 BED UNIT PLAN
TYPE - B

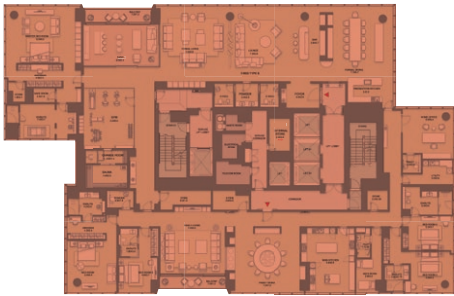
SALEABLE AREA

Suite Area - 11,010.73 SQ. FT.
Balcony - 259.30 SQ. FT.
Total Unit - 11,270.03 SQ. FT.

External Store at Same Level - 106.35 SQ. FT.
Additional Staff Accomodation Range - 1,200.00 SQ. FT. - 1,225.00 SQ. FT.
Additional Store Range - 610.00 SQ. FT. - 625.00 SQ. FT.
Total Saleable Area Range - 13,186.38 SQ. FT. - 13,226.38 SQ. FT.

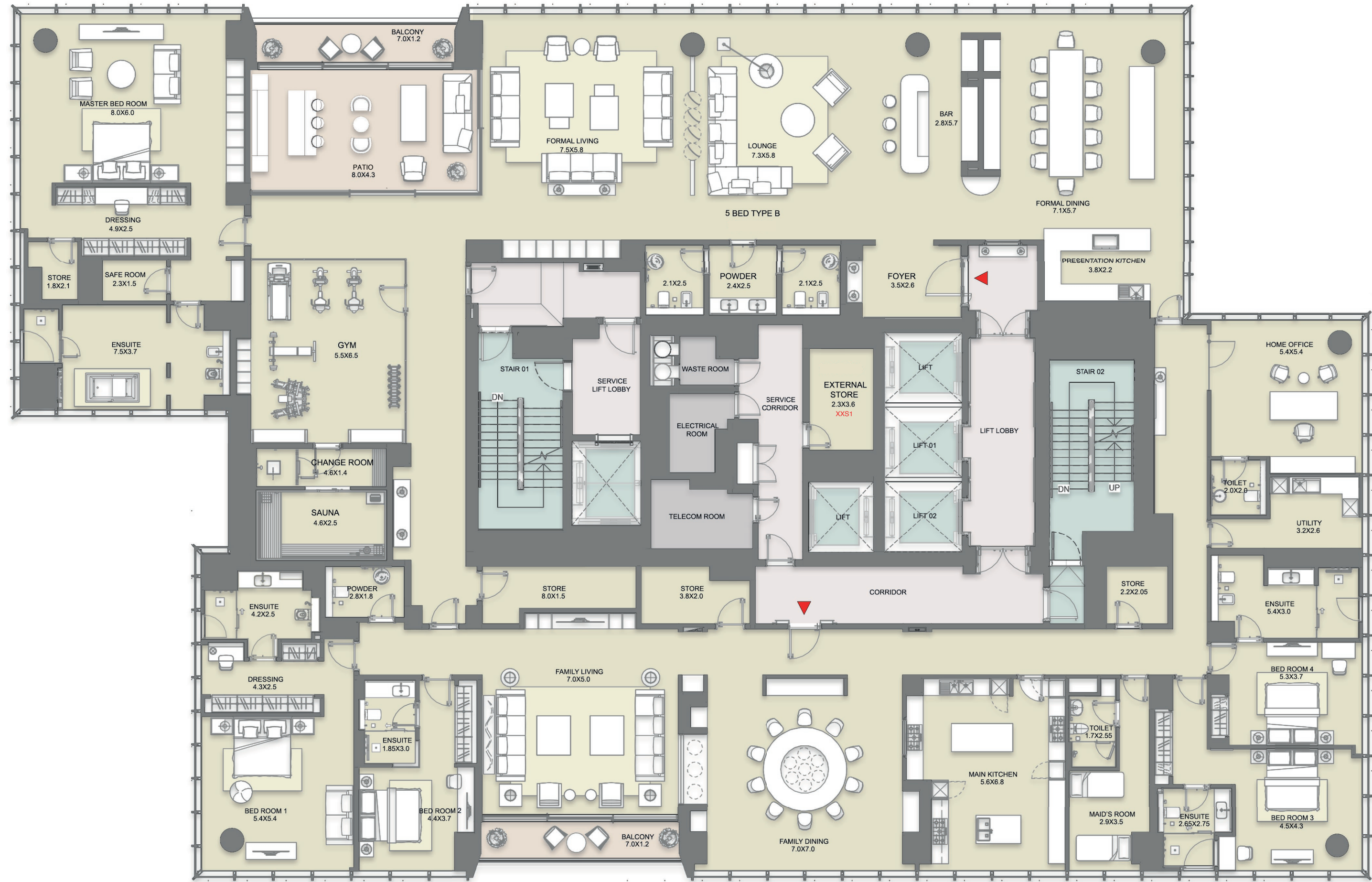
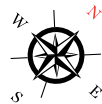
Total Number of Units - 2

SEA VIEW



SZR VIEW

LEVEL - 58 & 59



1. All dimensions are in metric, measured to wall finishes. 2. All materials, dimensions & drawings are approximate. 3. Information is subject to change without notice, at developer's absolute discretion. 4. Actual area may vary from the stated area. 5. Drawing are not to scale. 6. All images used are for illustrative purpose only and do not represent the actual size, features, and furnishings. The views shown vary by floor. 7. The specifications, fittings developer reserves the right to make revisions/ alterations, at its absolute discretion, without any liability whatsoever.